

Free Download Of Lead2pass Microsoft 70-981 PDF Dumps With The Latest Exam Questions (31-40)

Lead2pass presents the highest quality of 70-981 practice material which helps candidates to pass the 70-981 exams in the first attempt. The brain dumps are the latest, authenticated by expert and covering each and every aspect of 70-981 exam.

QUESTION 31

Your company has a private cloud that is managed by using a System Center 2012 infrastructure. You deploy an application visualization solution.

You deploy a server named Server1, and then you install the Remote Desktop Services server role.

Server1 is monitored by using Operations Manager.

You deploy a virtualized application named App1 to Server1.

You need to set the state of Server1 to critical if CPU utilization by App1 exceeds 80 percent for five minutes.

What should you create?

- A. a rule
- B. a monitor
- C. a service level objective (SLO)
- D. an event subscription
- E. a synthetic transaction

Answer: B

QUESTION 32

Your role of Systems Administrator at ABC.com includes the management of the company's private cloud.

The company has a System Center 2012 infrastructure that includes System Center 2012 - Service Manager (SCSM).

You use Service Manager for Service Level Management.

You need to create a service level objective (SLO) in Service Manager for incidents that meet the following criteria:

Priority = 1 Incident Category = Email

Problem. Assigned User = Empty.

What should be your first step?

- A. You should first create a Service Template.
- B. You should first create a Connector.
- C. You should first create a Queue.
- D. You should first create a Query.

Answer: C

QUESTION 33

Drag and Drop Questions

Your company has a private cloud that is managed by using a System Center 2012 Operations Manager infrastructure.

The infrastructure contains a management server named Server1.

The network contains two subnets named Subnet1 and Subnet2.

The two subnets are separated by a firewall that prevents ICMP communications.

Server1 is located on Subnet1.

A switch named Switch1 is located on Subnet2.

Switch1 has the following configurations:

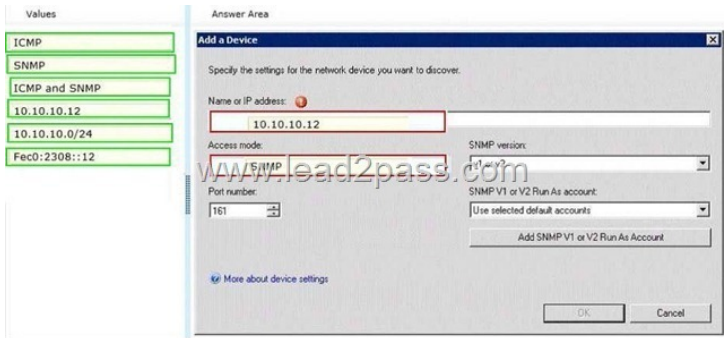
- Network ID: 10.10.10.0/24
- IPv4 address: 10.10.10.12
- IPv6 address: fec0:2308::12

You need to discover Switch1.

What should you configure from the Computer and Device Management Wizard? To answer, drag the appropriate values to the correct location in the answer area. (Each value may be used once, more than once, or not at all.)



Answer:



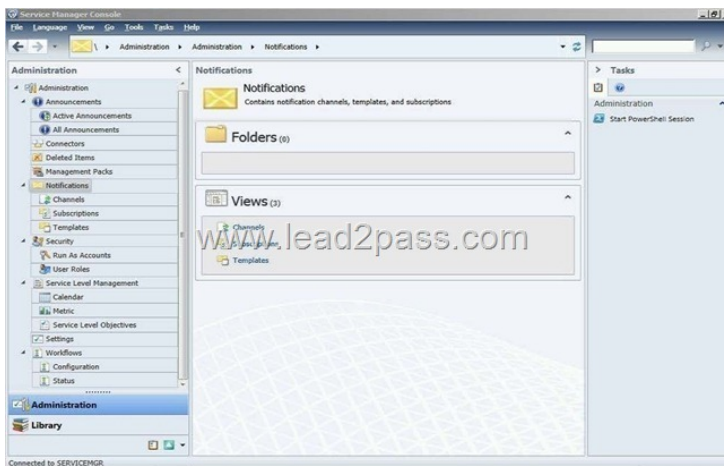
QUESTION 34

Hotspot Questions

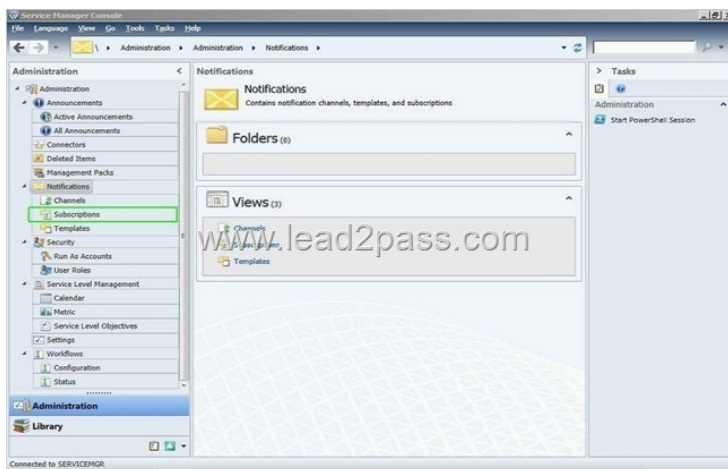
Your company help desk uses System Center 2012 Service Manager to manage and track problems.

You need to ensure that the manager of the help desk is notified automatically when a high-priority incident is updated.

What should you configure? To answer, select the appropriate configuration in the answer area.

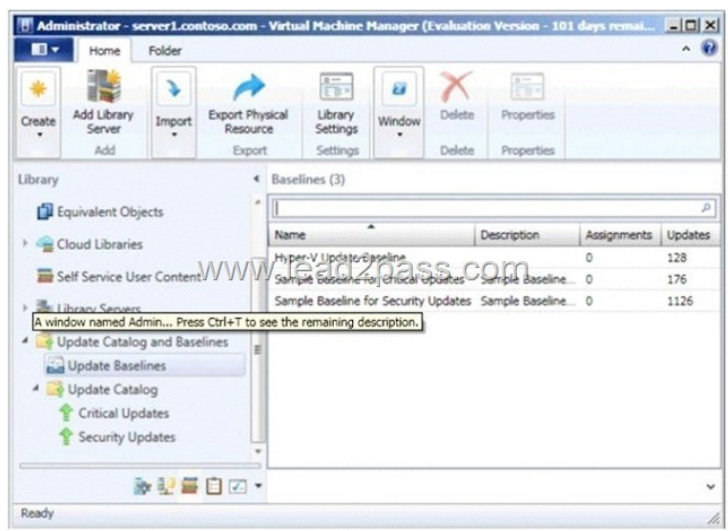


Answer:



QUESTION 35

Your company has a datacenter in Los Angeles that contains a private cloud. The private cloud is managed by using a System Center 2012 Virtual Machine Manager (VMM) infrastructure. You create a host group named HG1. You move several Hyper-V hosts to HG1. You plan to manage Windows updates for the hosts in HG1 by using VMM. An administrator creates a baseline as shown in the exhibit. (Click the Exhibit button.)



You discover that the updates defined in the baseline are not applied to the hosts in HG1. You need to ensure that the required updates are deployed to the hosts in HG1. What should you do?

- A. Copy the required updates to the VMM library server.

- B. Modify the properties of HG1.
- C. Copy the Virtual Machine template to an alternate location.
- D. Modify the properties of the baseline.
- E. Synchronize the Windows Server Update Services (WSUS) server.

Answer: D

QUESTION 36

Your role of Systems Administrator at ABC.com includes the management of the company's private cloud.

The private cloud is hosted on an internal System Center 2012 infrastructure.

The network includes servers that run Windows Server 2008 R2 Hyper-V and are managed by servers running System Center 2012 - Virtual Machine Manager (VMM).

You are configuring a hardware profile in VMM.

The hardware profile will be used to create virtual machines configured for Windows Network Load Balancing.

In the Network Adapter Properties, you configure the network adapter to be connected to a logical network and to use a Static IP address from the Static IP Pool.

You now need to configure the MAC address options.

Which two of the following options should you configure? (Choose two).

- A. You should select the option for a Dynamic MAC Address.
- B. You should select the option for a Static MAC Address.
- C. You should tick the Enable Spoofing of MAC Addresses checkbox.
- D. You should clear the Enable Spoofing of MAC Addresses checkbox.

Answer: BC

QUESTION 37

Your company has a private cloud that is managed by using a System Center 2012 infrastructure. The network contains 50 virtual machines that run Windows 7.

Each virtual machine has an application named Appl.exe installed.

A new version of Appl.exe is released.

You need to identify which virtual machines have the outdated version of Appl.exe installed.

What should you do?

- A. From Operations Manager, create a monitor.
- B. From Configuration Manager, deploy a Desired Configuration Management baseline.
- C. From Service Manager, create a Virtual Machine Manager (VMM) connector.
- D. From Virtual Machine Manager (VMM), deploy a service template.

Answer: B

QUESTION 38

Your company has a private cloud that is managed by using a System Center 2012 infrastructure. You deploy Data Protection Manager (DPM) to a server named DPM1.

A server named Server1 has the Hyper-V server role installed and hosts a virtual machine named VM1.

From DPM1, you perform a full backup of Server1.

You discover that you are unable to restore individual files from VM1.

You need to ensure that you can restore individual files from VM1 by using the DPM Administrator console.

What should you do first?

- A. On VM1, install Windows Server Backup.
- B. On DPM1, attach the VHD of VM1.
- C. On DPM1, install the Hyper-V server role.
- D. On VM1, install the integration features.

Answer: C

QUESTION 39

Your company has a private cloud that is managed by using a System Center 2012 infrastructure. The infrastructure contains multiple servers that have Data Protection Manager (DPM) installed. A DPM server named Server1 is running out of hard disk space.

You add additional physical hard disks to Server1.

You verify that the additional disks are available from the local Disk Management console.

You need to ensure that the additional disk space can be used to store DPM backups.

What should you do?

- A. From the DPM Administrator console, click Refresh.
- B. From the DPM Administrator console, click Disk Allocation.
- C. From the DPM Administrator console, click Add.
- D. From the DPM Administrator console, click Rescan.

Answer: C

QUESTION 40

Your company has a private cloud that is managed by using a System Center 2012 infrastructure. You deploy Data Protection Manager (DPM) to the private cloud.

You configured DPM to back up the following information on 20 servers that run Windows Server 2008 R2:

- Data volumes
- System state data
- Volume mount points

You discover that the system state backup fails on all of the servers.

You can verify that all other data is backed up successfully.

You need to ensure that the system state backup completes successfully on all of the servers. What should you do?

- A. Install Windows Server Backup on each server.
- B. Connect each server to a dedicated LUN.
- C. Reinstall the DPM agent on each server.
- D. Add each server to a dedicated protection group.

Answer: A

If you want to get more 70-981 exam preparation material, you can download the free brain dumps in PDF files on Lead2pass. It would be great help for your exam. All the dumps are updated and cover every aspect of the examination

<http://www.lead2pass.com/70-981.html>